



Association for
Computing Machinery

Digital Government: Research and Practice (DGOV)

*An Open Access research journal on the
potential and impact of technology on
governance innovations and public institutions*

Digital Government: Research and Practice (DGOV) is an interdisciplinary journal on the potential and impact of technology on governance innovations and its transformation of public institutions. It promotes applied and empirical research from academics, practitioners, designers, and technologists, using political, policy, social, computer, and data sciences methodologies.

DGOV aims to appeal to a wider audience of research and practice communities with novel insights, disruptive design ideas, technical solutions, scientific and empirical knowledge, and a deep understanding of digital impact in the public sector. The major areas include the new forms of governance and citizen roles in the inter-connected digital environment, as well as the governance of new technologies, including governance of automation, sensor devices, robot behavior, artificial intelligence, and big data. Whether it is governing technology or technology for governing, the goal is to offer cutting-edge research and concepts designed to navigate and balance the competing demands of transparency and cybersecurity, innovation and accountability, and collaboration and privacy.



For further information and to submit
your manuscript, visit dgov.acm.org

[CONTINUED FROM P. 108] approach is that it requires doubling the number of people polled to get the same effective sample size. In terms of this example, 200 people must be sampled to get an effective sample size of 100.

Question: Suppose T has the support of approximately 60% of the people and B has the support of 40%. Suppose the stigma is against only B supporters. Assuming the people who are polled are given a standard deck of 52 playing cards, can you make it so that if a person responds B, then that person has approximately a 50% chance of actually supporting B and achieve an effective sample size of 100 by polling only 140 people?

Solution: Suppose that with probability $2/7$ a person will say B regardless of his or her view. Then if 60% want T and 40% want B, B will receive $(2/7) * 140 = 40$ votes because of this $2/7$ probability and another 40 from the committed B supporters. Such a scheme would have the goal of having anyone who responds with B to the pollster to have a 50% chance of supporting B. To achieve this, the pollster says to the pollee: "Please take seven cards including an Ace, 2, 3, 4, 5, 6, and 7, regardless of suit. Shuffle the seven cards. Now turn over one card. If it is an Ace or a 7, say B. Otherwise, please tell me what you really think." In this way, only 40 extra people must be interviewed to get an effective sample size of 100 or in general $2/7$ extra people.

Upstart: Generalize the above solution to k candidates all with approximately equal support. Each person should have a probability of no more than p of actually supporting the candidate he or she mentions. You can assume for this purpose the pollee has access to a trusted random number generator that will give a number between 0 and 1 with uniform probability. It should be enough to use this random number generator just once per pollee.

Dennis Shasha (dennisshasha@yahoo.com) is a professor of computer science in the Computer Science Department of the Courant Institute at New York University, New York, USA, as well as the chronicler of his good friend the omniheurist Dr. Ecco.

All are invited to submit their solutions to upstartpuzzles@cacm.acm.org; solutions to upstarts and discussion will be posted at <http://cs.nyu.edu/cs/faculty/shasha/papers/cacmpuzzles.html>

Copyright held by author.



DOI:10.1145/3416266

Dennis Shasha

Upstart Puzzles

Privacy-Preserving Polling

Can you answer a poll without revealing your true preferences and have the results of the poll still be accurate?

WHEN PEOPLE ARE asked whom they will vote for, they might not want to say. After all, other people might judge them, ask for contributions, or publish the answer. Suppose there are two candidates, randomly called B and T. Suppose, again for the sake of this hypothetical, that there is a slight stigma against people who support T.

The pollster says to them: “Please flip a coin. If the coin comes up tails, please tell us whom you like best. If it comes up heads, then always say T.” That way, even if a person states an intention to vote for T, nobody knows for sure.

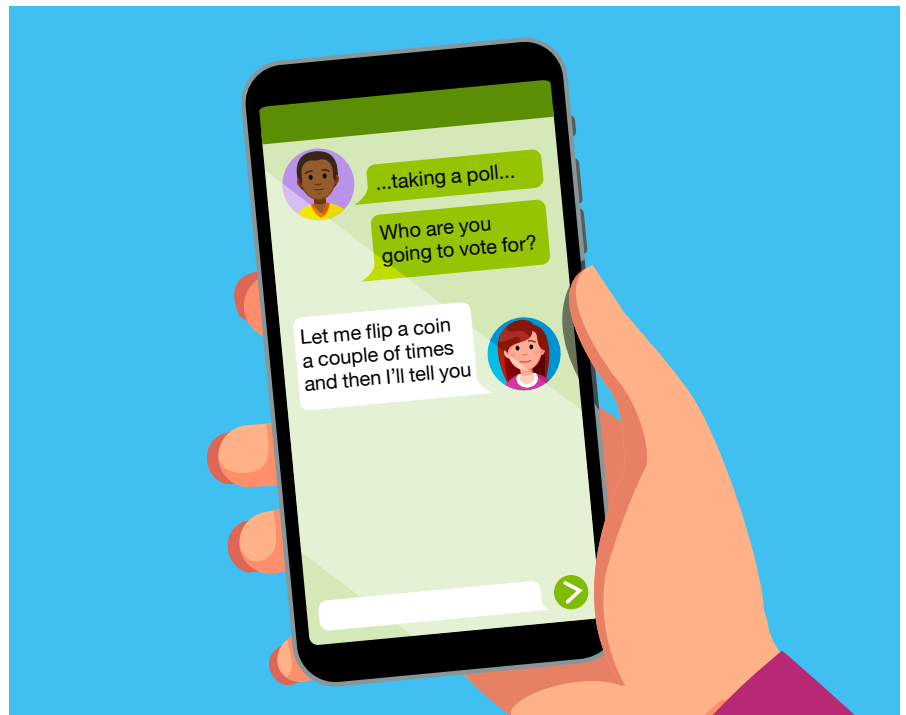
Warm-Up: Suppose the true probabilities are 60% for B and 40% for T. 200 people are again polled. How many will say T in response to the poll with the coin-flip rule and how many will say B?

Solution to Warm-Up: Approximately half the people—100—will flip heads and will say T, regardless of their preferences. Of the other half—60—will say B and 40 will say T. So 140 will say T and 60 will say B.

Warm-Up 2: Suppose 70% want T and 30% want B. 200 people are again polled. How many will say T in response to the poll with the coin-flip rule and how many will say B?

Solution to Warm-Up 2: 170 for T and 30 for B. So to find the true support for T and B, simply subtract from the T score half of the total number of people polled. Leave the B score alone.

But now suppose a country is so divided that, depending on whom you



Political pollster: “We understand your choice of candidate may be something you want to keep private. At the end of this process, only you will know for sure whether the choice you mention is your real choice or not.”

talk to, there might be a stigma to vote for either candidate. Can the pollsters still do their job?

Question: Can you think of a protocol that will protect privacy for supporters both of B and T?

Solution: Here is one possibility. Tell the pollees (the people asked): “Please flip a coin twice. If it comes up heads both times, then please say T. If it comes up tails both times, please say B. With any other combination, please

tell us the truth.” Suppose again for the purposes of example 60% want B and 40% want T. If 200 people are polled, B will get 60 true answers and 50 because of double tails. The remaining 90 will go to T. Thus, we subtract a quarter of the total number of people polled (50 in this example) from B (yielding $110 - 50 = 60$), a quarter from T (yielding $90 - 50 = 40$) and we get the correct answer.

The only trouble with this privacy-preserving [CONTINUED ON P. 107]