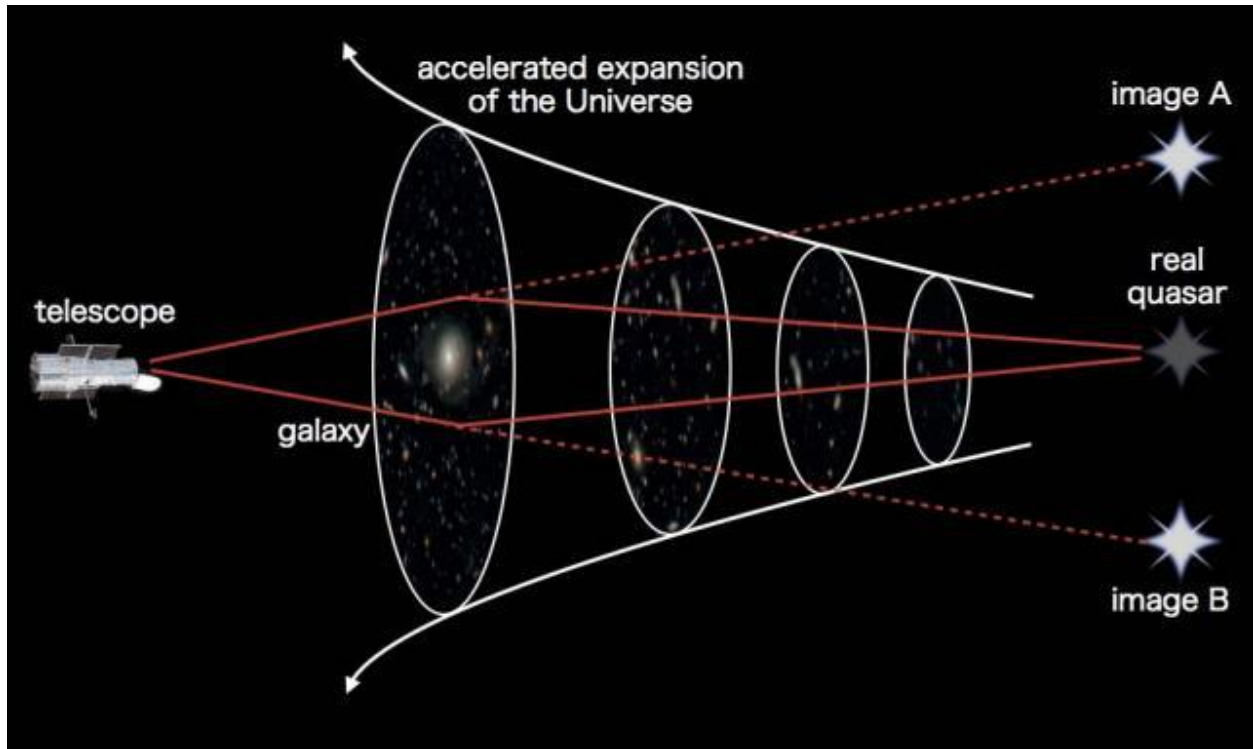


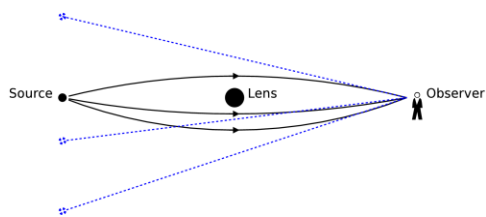
The lensing:

Different scenarios:

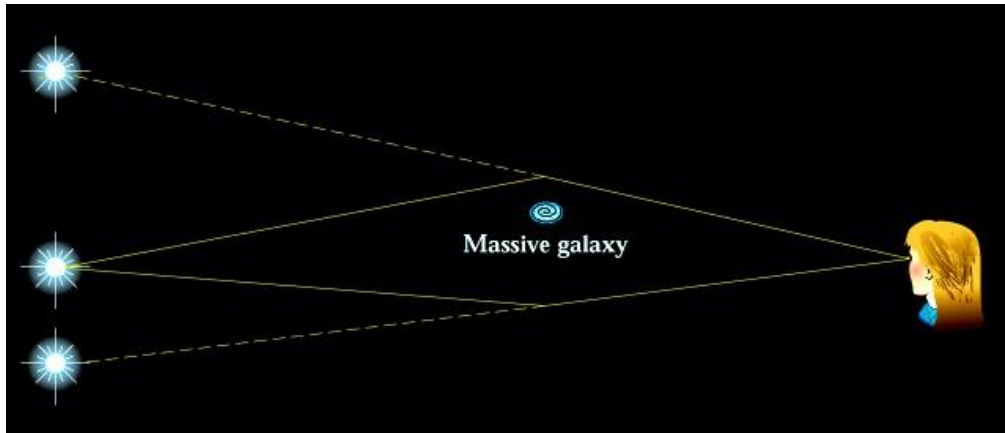
- 1) The observer views 2 images of the same thing. The images A and B have the same distance from the real object.



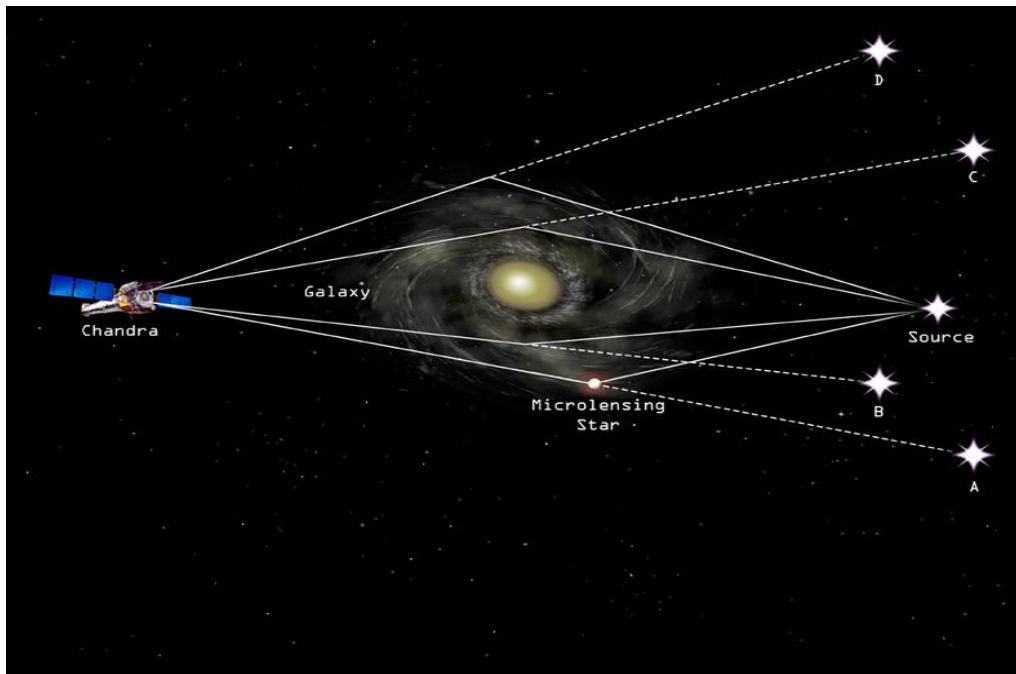
- 2) The observer views 3 images of the same thing. The images A and B, C have different distances from the real object.



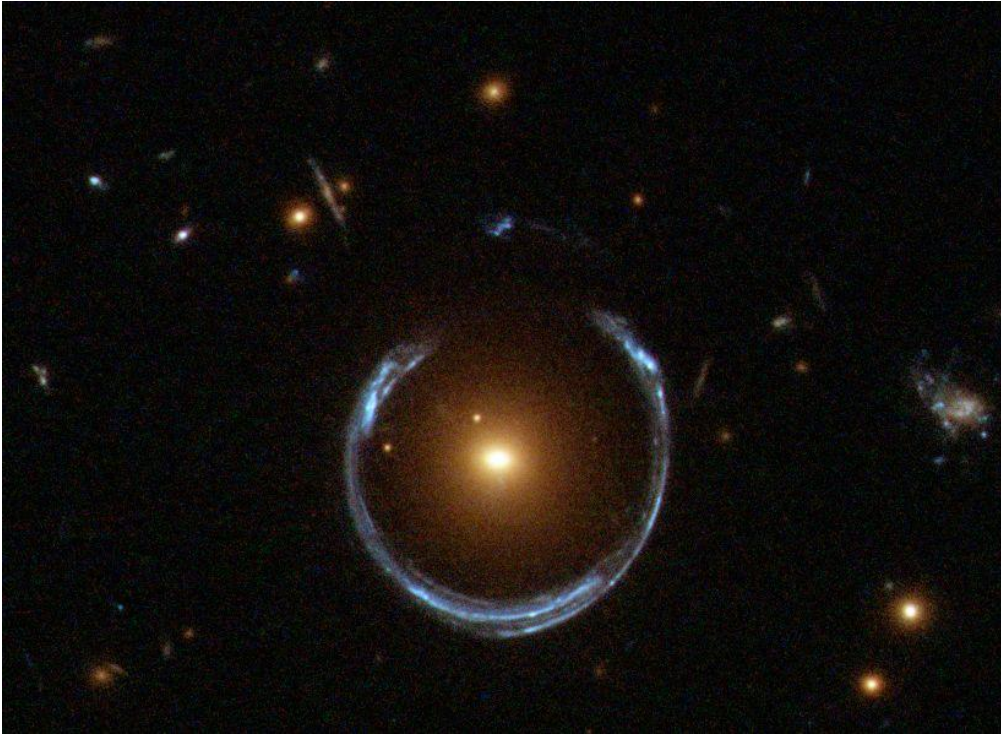
- 3) The observer views 2 images of the same thing. The images A and B have different distances from the real object.



- 4) The observer views 4 images of the same thing. The images A, B, C, D have the same distance from the real object.



5) The observer views a ring around the real object.



Questions:

- a) Is the above scenarios are true?
- b) Which scenario are you interested more?
- c) Could you give us a real set of sky objects in a real dataset with the following attributes?
 - a. ObjID
 - b. Ra, Dec
 - c. U, f, g, l, z