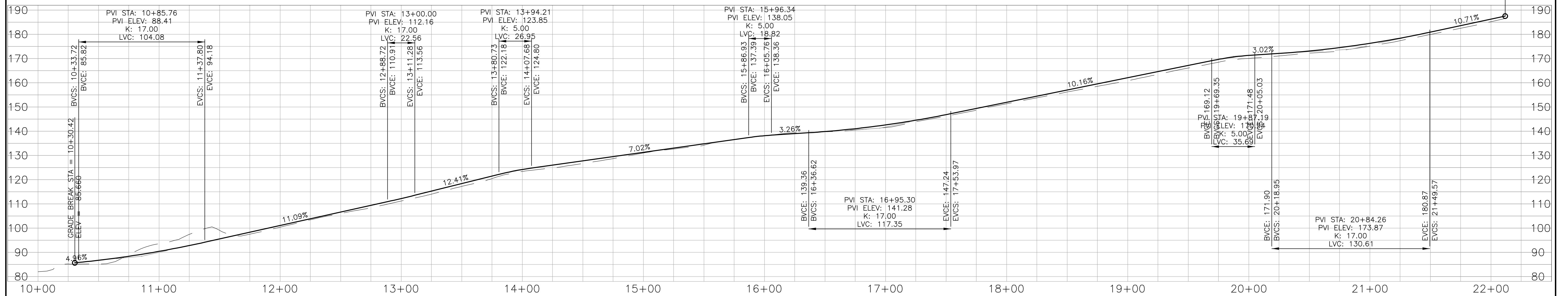
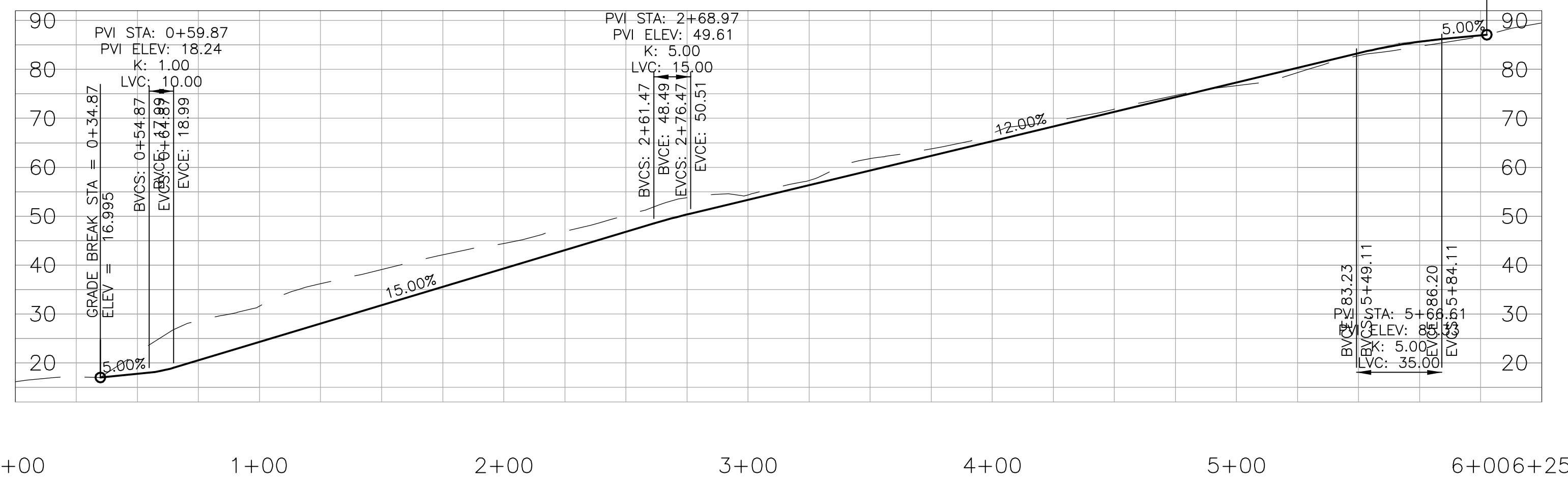


UpperRd PROFILE

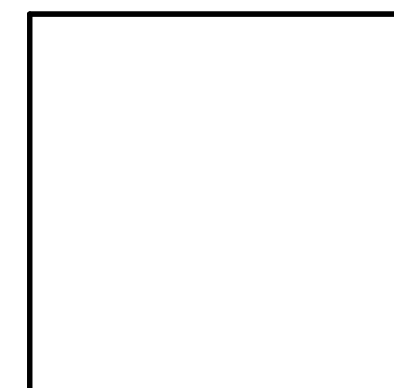


LowerRd PROFILE



2/22/2011 WORK-IN-PROGRESS / NOT FOR CONSTRUCTION

DESIGNED:	SSS	
DRAWN:	SSS	
CHECKED:		
DATE:	__/__/2011	
DATE	NO.	DESCRIPTION
R E V I S I O N S		



SUMMERSETT CIVIL ENGINEERING
 6305 Miller Road
 Mount Hood Parkdale, OR 97041-8722
 (541) 352-9313

PRELIMINARY PROFILE
MANCINI ACCESS ROAD
 T01N R10E S21 TL107 HOOD RIVER COUNTY, OR

SHEET NO.	2 OF 6
JOB NO.	01N10E21107