

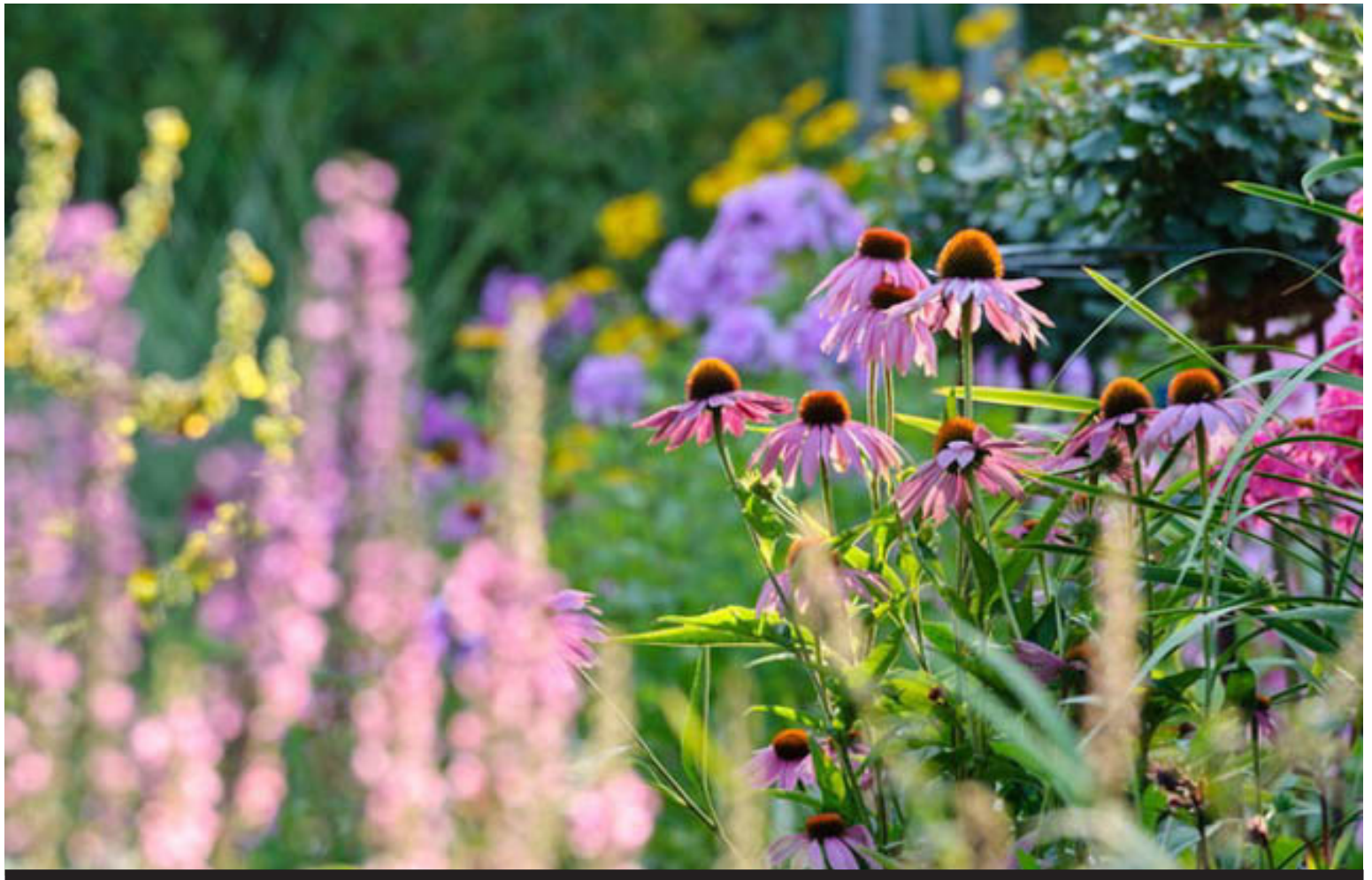


ERSKINE VILLAGE

PLANT IDENTIFICATION & SELECTION

PREPARED FOR:
ERSKINE VILLAGE ASSOCIATES

FEBRUARY 2020

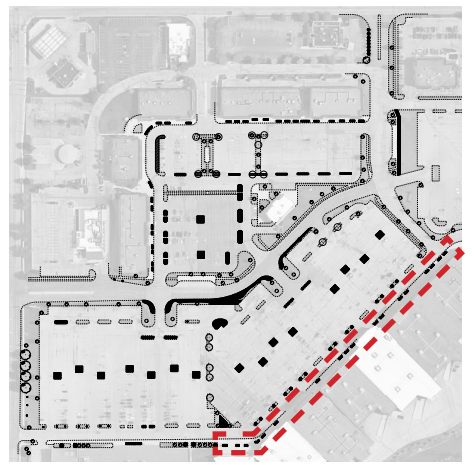
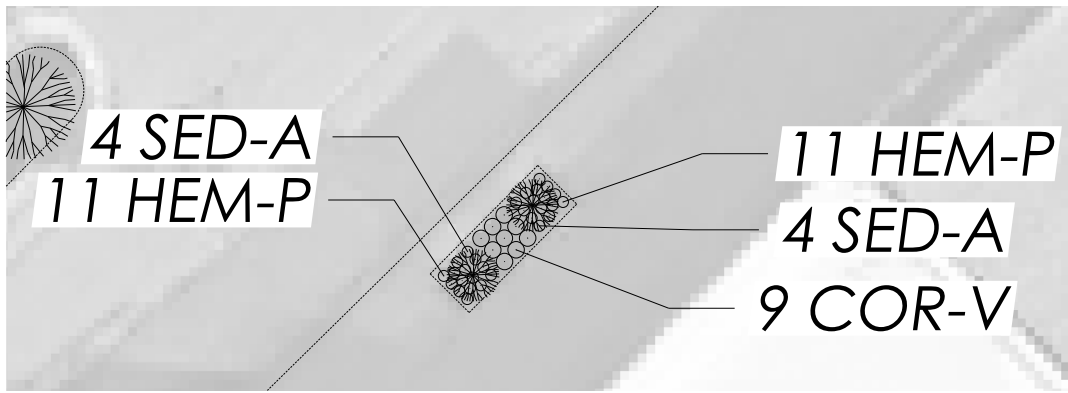


Throughout the entire Erskine Village campus, we have chosen plants to reflect:

- **“Prairie style” palette:** Involves primarily native or widely available plants that require overall less maintenance. This style includes grasses and other hardy plants.
- **Low growing plants:** Most plants are under 3’ in mature height, with all plants being thoughtfully arranged for improved visibility.
- **Seasonal variety:** Ensuring that there is interest in winter as well as summer, with bloom times that hit at different points during the year.
- Complementary colors to Mr. Shakespeare’s building recommendations.
- Plants that are cold hardy, salt and drought tolerant, and are able to spread within their respective beds.

The plantings are shown in masses to create greater impact and several areas that are currently doing well were left intact.

In all cases, we recommend amending the existing soil of the planting areas with peat and compost. Silt build-up in parking lots and other urban conditions, limit the organic material that plants need to be successful. Topsoil and compost is readily available from the City of South Bend for local landscaping contractors, especially earlier in the season.



PLANT LIST

QTY.	SYMBOL	COMMON NAME	BOTANICAL NAME	CHARACTER	SIZE	CONDITION
Perennials						
	COR-V	Moonbeam Coreopsis	Coreopsis verticillata 'Moonbeam'		24"	Cont.
	HEM-P	Pandora's Box Daylily	Hemerocallis 'Pandora's Box'		1 Gal.	Cont.
	SED-A	Autumn Joy Sedum	Sedum 'Autumn Joy'		1 Gal.	Cont.

PLANTING SELECTION - SOUTH CAMPUS STORE FRONTAGE

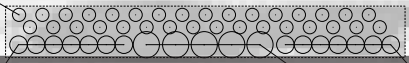


Store Frontage (South) Planting Concept

- Repeated along the entire frontage to create a uniform look that supports the buildings.
- Moonbeam coreopsis spreads to fill bed, with bright flowers which bloom at different times than the complementary daylily and sedum.



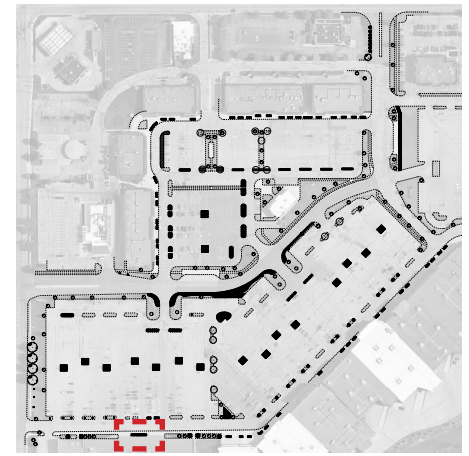
30 HEU-A



7 CAL-A

7 CAL-A

5 HYD-M



PLANT LIST

QTY.	SYMBOL	COMMON NAME	BOTANICAL NAME	CHARACTER	SIZE	CONDITION
Shrubs						
	HYD-M	Big Leaf Hydrangea	Hydrangea macrophylla 'All Summer Beauty'		24"	B&B
Perennials						
	CAL-A	Feather Reed Grass	Calamagrostis acutiflora 'Karl Foerster'		1 Gal.	Cont.
	HEU-M	Midnight Rose Coral Bell	Heuchra 'Midnight Rose'		1 Gal.	Cont.

PLANTING SELECTION - KOHL'S ENTRANCE



Bloom Time: May - Feb.

Size: 36" Ht.

Feather Reed Grass



Bloom Time: May - Feb.

Size: 36" Ht.

Bigleaf Hydrangea



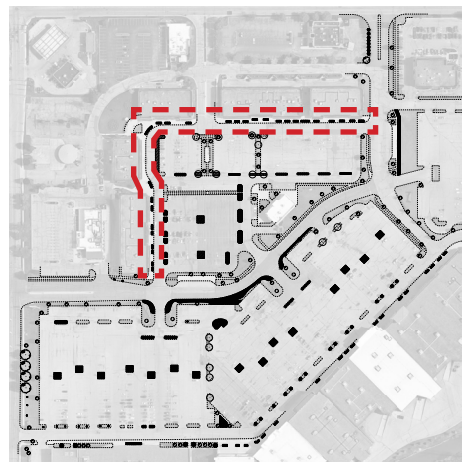
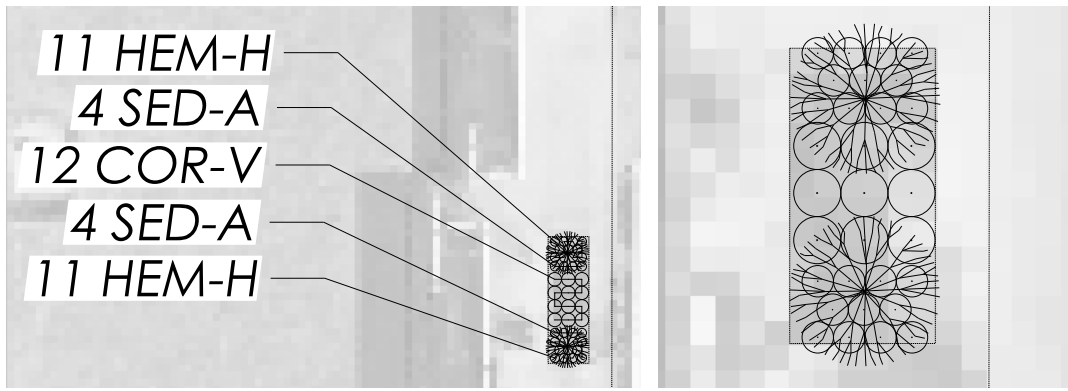
Bloom Time: May - Feb.

Size: 12" Ht.

Autumn Leaf Coral Bells

Anchor Store (South) Frontage Planting Concept

- Creates more visual interest at the main entrance of the anchor store.
- Survives on the north side of the building with less direct sunlight.



PLANT LIST						
QTY.	SYMBOL	COMMON NAME	BOTANICAL NAME	CHARACTER	SIZE	CONDITION
Perennials						
	COR-V	Moonbeam Coreopsis	Coreopsis verticillata 'Moonbeam'		24"	Cont.
	HEM-A	Happy Returns Daylily	Hemerocallis 'Happy Returns'		1 Gal.	Cont.
	SED-A	Autumn Joy Sedum	Sedum 'Autumn Joy'		1 Gal.	Cont.

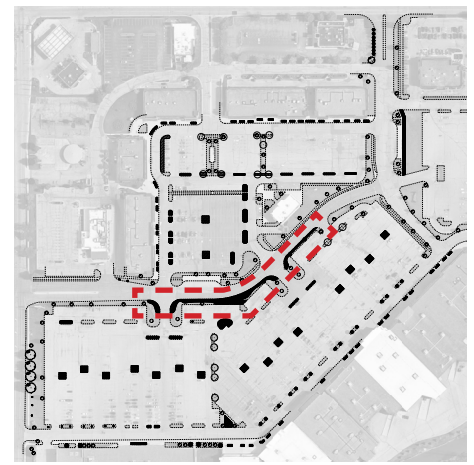
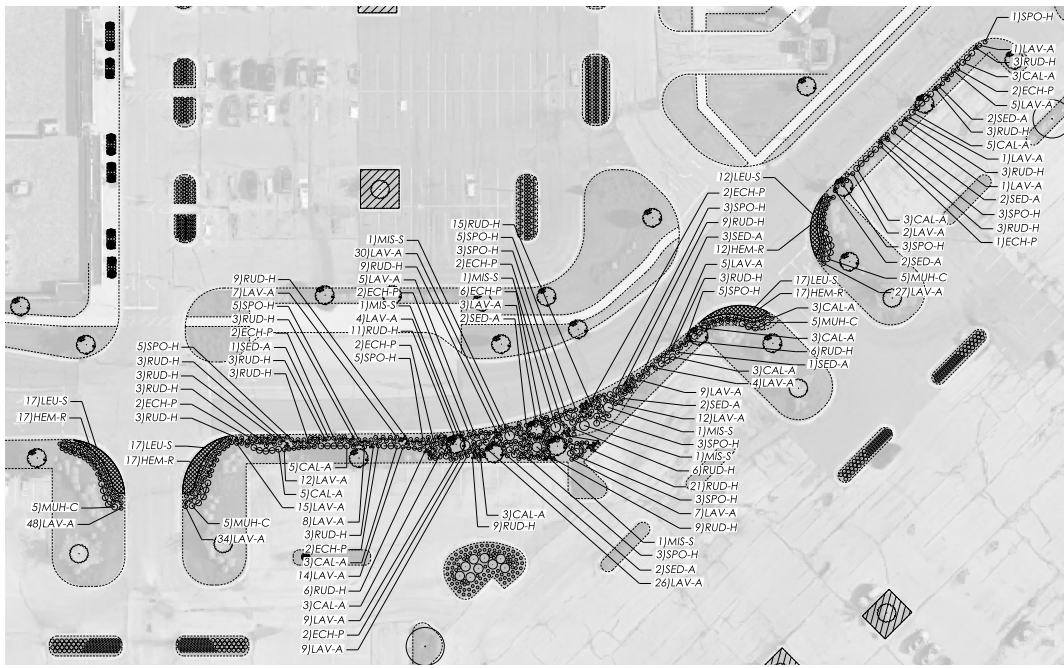
PLANTING SELECTION - NORTH CAMPUS STORE FRONTAGE



Store Frontage Planting Concept

- Carries similar plants and theme from other frontage areas, giving the visitors visual cues of important areas within the campus.





Central Spine Planting Concept

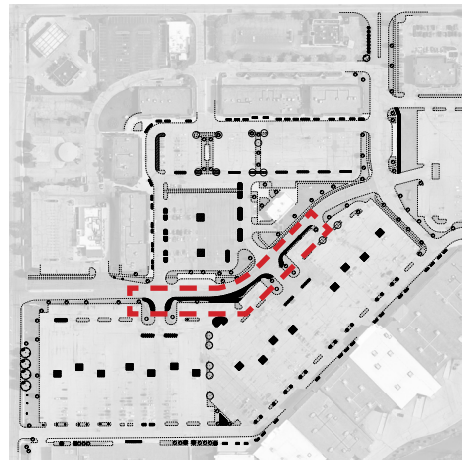
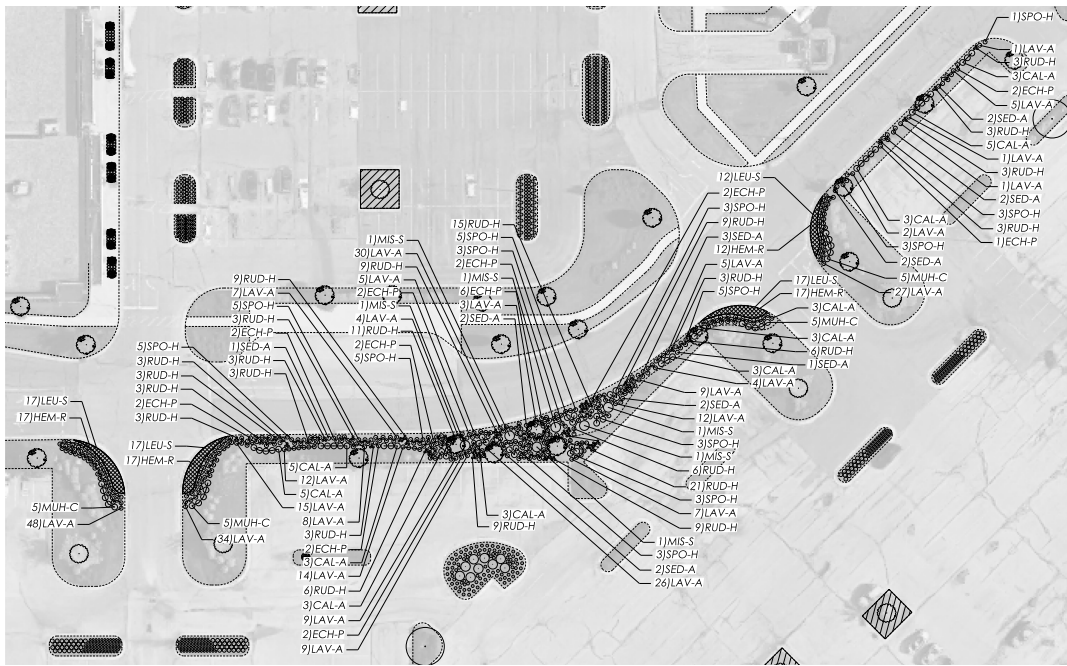
- Removes lawn areas here and bolsters existing planting to give a fuller look through the central part of the campus. Color is used to highlight the entrances.

PLANT LIST

QTY.	SYMBOL	COMMON NAME	BOTANICAL NAME	CHARACTER	SIZE	CONDITION
Perennials						
	CAL-A	Feather Reed Grass	<i>Calamagrostis acutiflora</i> 'Karl Foerster'		1 Gal.	Cont.
	COR-V	Moonbeam Coreopsis	<i>Coreopsis verticillata</i> 'Moonbeam'		24"	Cont.
	ECH-P	Purple Coneflower	<i>Echinacea purpurea</i>		1 Gal.	Cont.
	HEM-R	Red Magic Daylily	<i>Hemerocallis</i> 'Red Magic'		1 Gal.	Cont.
	LEU-S	Alaska Shasta Daisy	<i>Leucanthemum x superbum</i> 'Alaska'		1 Gal.	Cont.
	LAV-A	English Lavendar	<i>Lavandula angustifolia</i>		1 Gal.	Cont.
	MIS-S	Maidenhair Grass	<i>Miscanthus sinensis</i> 'Grassmillus'		1 Gal.	Cont.
	PEN-A	Dwarf Fountain Grass	<i>Pennisetum alopecuroides</i> 'Hameln'		1 Gal.	Cont.
	RUD-S	Sweet Black-Eyed Susan	<i>Rudbeckia subtomentosa</i>		1 Gal.	Cont.
	SED-A	Autumn Joy Sedum	<i>Sedum</i> 'Autumn Joy'		1 Gal.	Cont.
	SPO-H	Prairie Dropseed	<i>Sporobolus heterolepis</i>		1 Gal.	Cont.

PLANTING SELECTION - MAIN THOROUGHFARE PLANTINGS

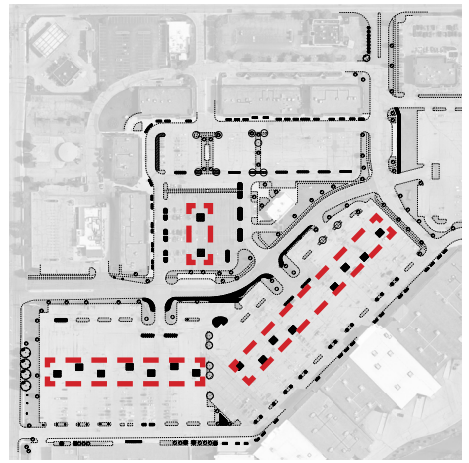
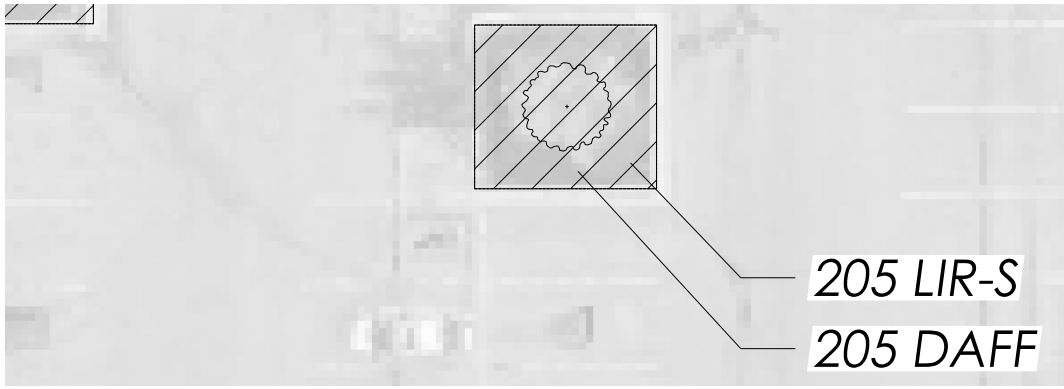




PLANT LIST						
QTY.	SYMBOL	COMMON NAME	BOTANICAL NAME	CHARACTER	SIZE	CONDITION
Perennials						
	CAL-A	Feather Reed Grass	Calamagrostis acutiflora 'Karl Foerster'		1 Gal.	Cont.
	COR-V	Moonbeam Coreopsis	Coreopsis verticillata 'Moonbeam'		24"	Cont.
	ECH-P	Purple Coneflower	Echinacea purpurea		1 Gal.	Cont.
	HEM-R	Red Magic Daylily	Hemerocallis 'Red Magic'		1 Gal.	Cont.
	LEU-S	Alaska Shasta Daisy	Leucanthemum x superbum 'Alaska'		1 Gal.	Cont.
	LAV-A	English Lavender	Lavandula angustifolia		1 Gal.	Cont.
	MIS-S	Maidenhair Grass	Miscanthus sinensis 'Grassmillus'		1 Gal.	Cont.
	PEN-A	Dwarf Fountain Grass	Pennisetum alopecuroides 'Hameln'		1 Gal.	Cont.
	RUD-S	Sweet Black-Eyed Susan	Rudbeckia subtomentosa		1 Gal.	Cont.
	SED-A	Autumn Joy Sedum	Sedum 'Autumn Joy'		1 Gal.	Cont.
	SPO-H	Prairie Dropseed	Sporobolus heterolepis		1 Gal.	Cont.

PLANTING SELECTION - MAIN THOROUGHFARE PLANTINGS





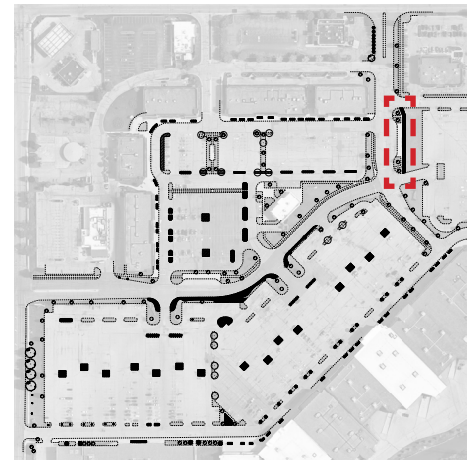
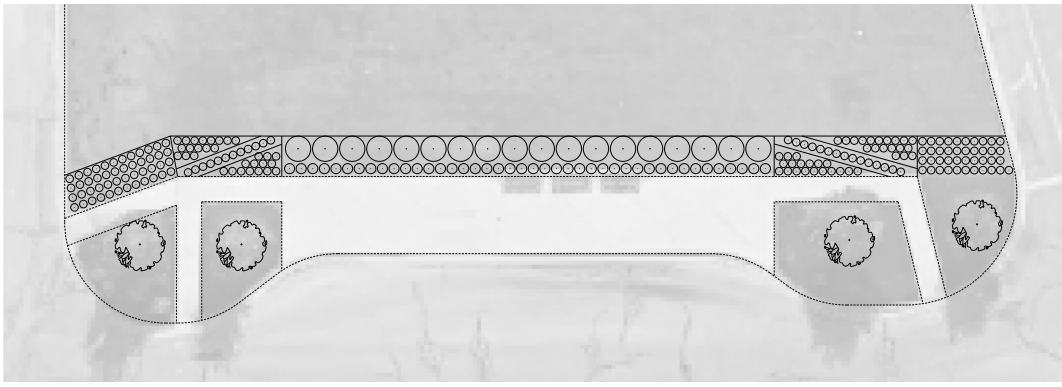
PLANT LIST						
QTY.	SYMBOL	COMMON NAME	BOTANICAL NAME	CHARACTER	SIZE	CONDITION
Perennials						
	DAFF	Assorted Daffodil	Assorted Daffodil			Bulb
	LIR-S	Creeping Liriope	Liriope spicata	Plug, 12" O.C.		Tray
DAFFODIL BULB ASSORTMENT LIST						
	Daffodil Variety	Percent				
	White Lion Double Daffodil	20				
	Tahiti Daffodil	20				
	Sir Winston Churchill Daffodil	20				
	Bridal Crown Daffodil	20				
	Dick Wilden Daffodil	20				

Islands Planting Concept

Removes lawn areas with evergreen groundcover that will fill the entire bed area and flowers in late summer. Daffodil bulbs supplement.

PLANTING SELECTION - CENTER PARKING LOT ISLANDS





PLANT LIST

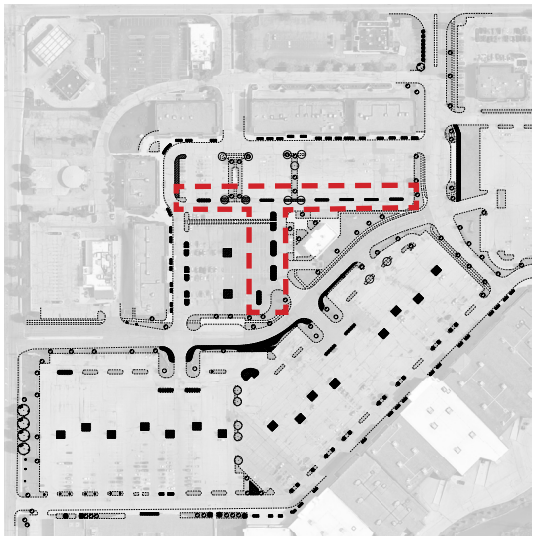
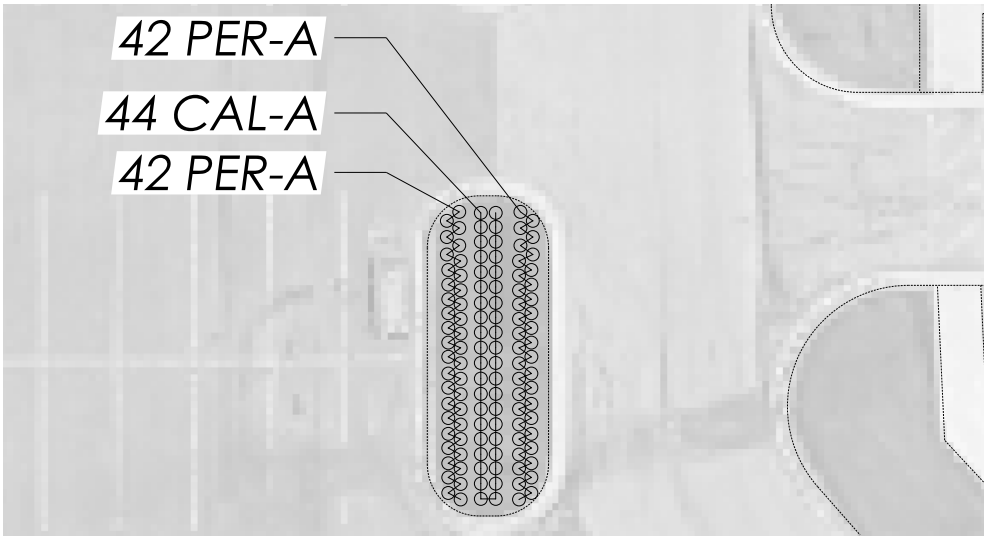
QTY.	SYMBOL	COMMON NAME	BOTANICAL NAME	CHARACTER	SIZE	CONDITION
Shrubs						
	BUX-G	Green Gem Boxwood	Buxus x 'Green Gem'		24"	B&B
	COR-C	Red Twig Dogwood	Cornus sericea 'Cardinal'		36"	B&B
Perennials						
	PER-A	Little Spire Russian Sage	Perovskia atriplicifolia 'Little Spire'		1 Gal.	Cont.
	PEN-A	Dwarf Fountain Grass	Pennisetum alopecuroides 'Hameln'		1 Gal.	Cont.
	HEM-A	Happy Returns Daylily	Hemerocallis 'Happy Returns'		1 Gal.	Cont.
	HEM-P	Pandora's Box Daylily	Hemerocallis 'Pandora's Box'		1 Gal.	Cont.
	HEM-R	Red Magic Daylily	Hemerocallis 'Red Magic'		1 Gal.	Cont.
	SAL-M	Maynight Salvia	Salvia sylvestris 'Maynight'		1 Gal.	Cont.

North Campus Planting Concept

Removes a small swath of lawn area to improve the perception of campus along the main entrance route.

PLANTING SELECTION - NORTH CAMPUS ENTRANCE PLANTINGS





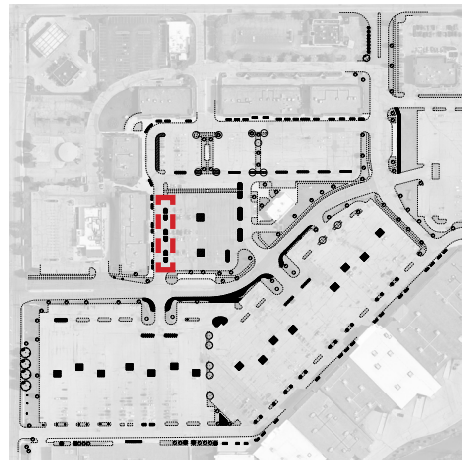
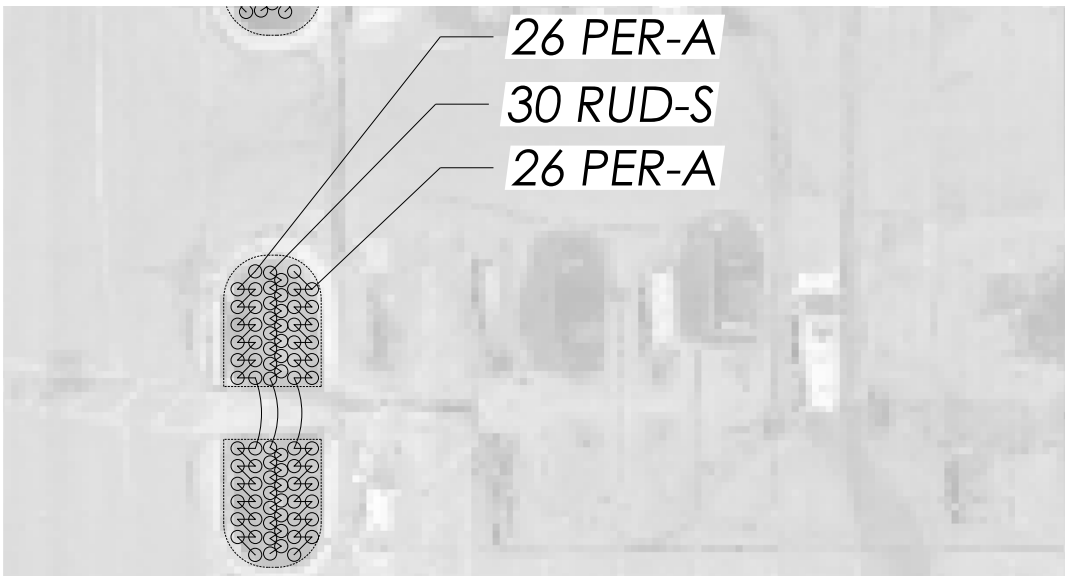
PLANT LIST						
QTY.	SYMBOL	COMMON NAME	BOTANICAL NAME	CHARACTER	SIZE	CONDITION
Perennials						
	CAL-A	Feather Reed Grass	<i>Calamagrostis acutiflora</i> 'Karl Foerster'		1 Gal.	Cont.
	PER-A	Little Spire Russian Sage	<i>Perovskia atriplicifolia</i> 'Little Spire'		1 Gal.	Cont.

PLANTING SELECTION - NORTH CAMPUS PARKING LOT ISLANDS



North Campus Parking End Caps Planting Concept

- Planting here was chosen to fill out these beds along this secondary circulation route through the middle of the campus. The mass plantings visually direct visitors to the buildings by providing a uniform line along the route.



PLANT LIST						
QTY.	SYMBOL	COMMON NAME	BOTANICAL NAME	CHARACTER	SIZE	CONDITION
Perennials						
	PER-A	Little Spire Russian Sage	<i>Perovskia atriplicifolia</i> 'Little Spire'		1 Gal.	Cont.
	RUD-S	Sweet Black-Eyed Susan	<i>Rudbeckia subtomentosa</i>		1 Gal.	Cont.

PLANTING SELECTION - NORTH CAMPUS PLANT BEDS 2



North Campus Parking End Caps 2 Planting Concept

- Similar to the other beds in this area to provide campus continuity, plants here are suggested because of their ability to fill in the areas that are currently underperforming.