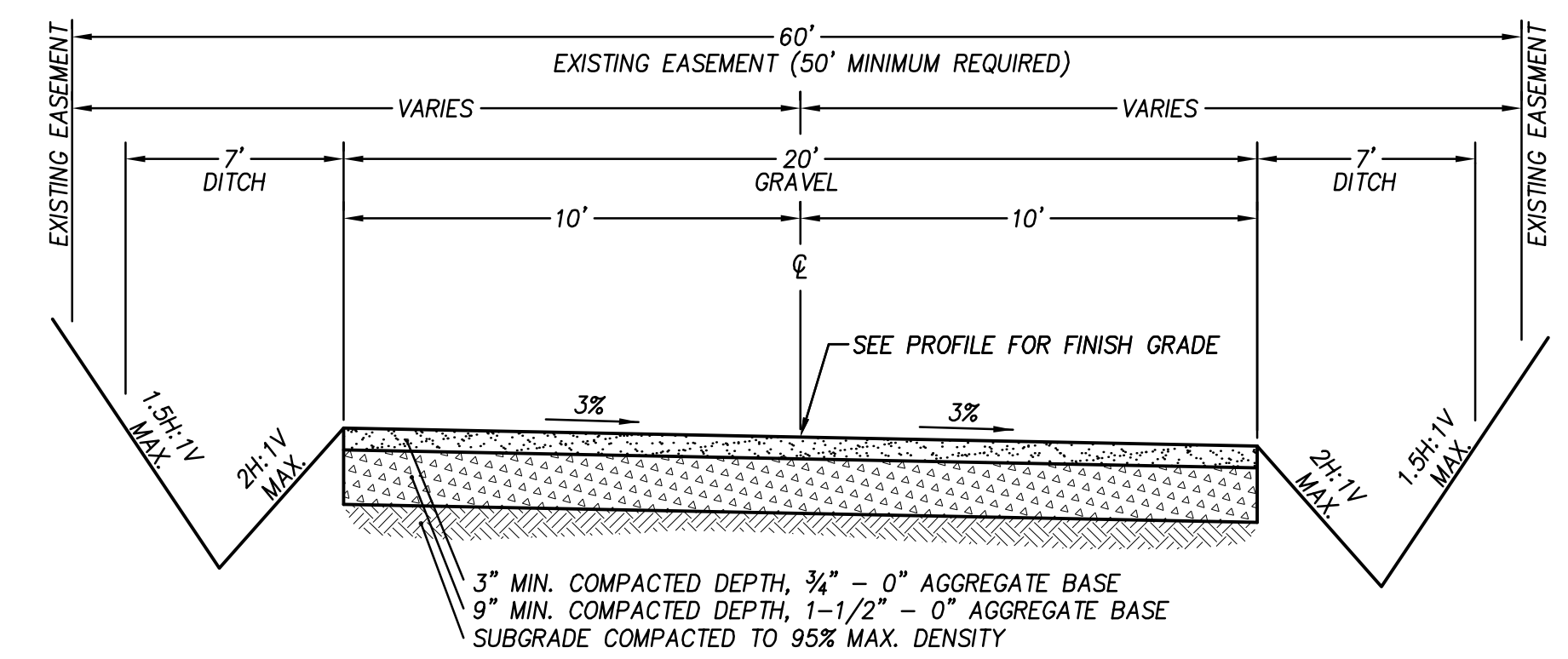
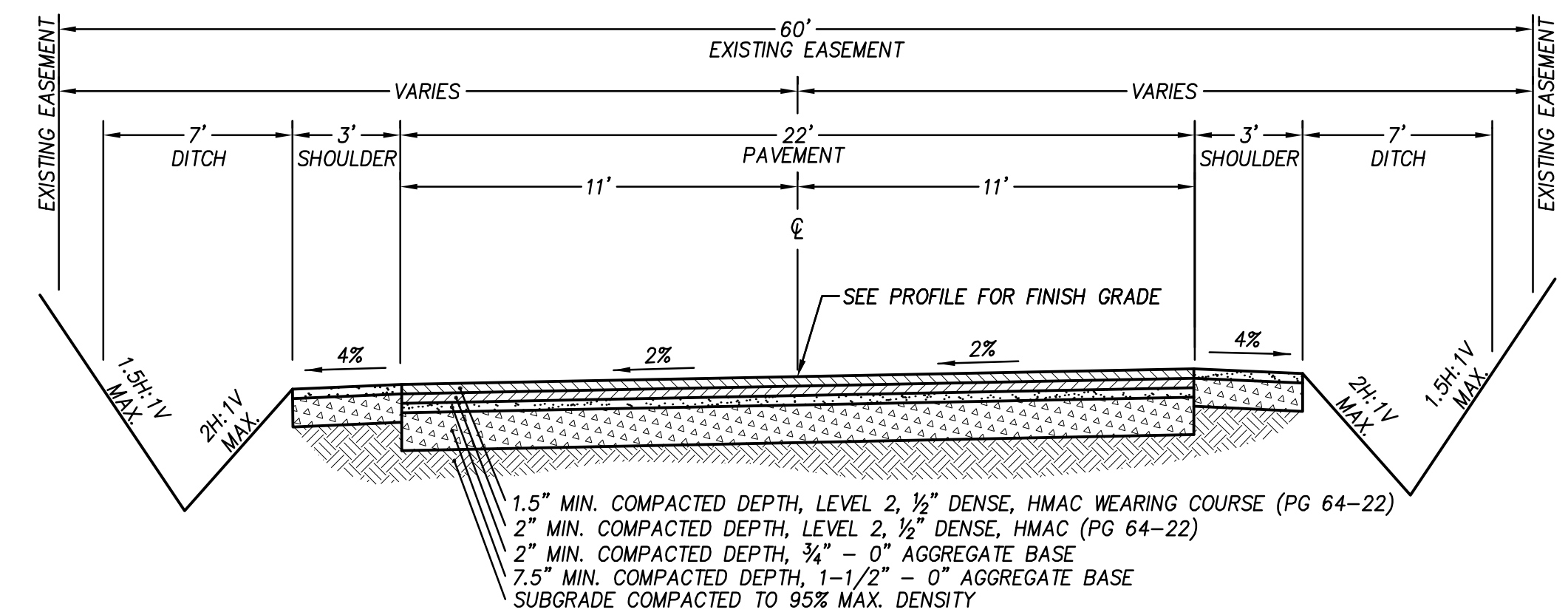


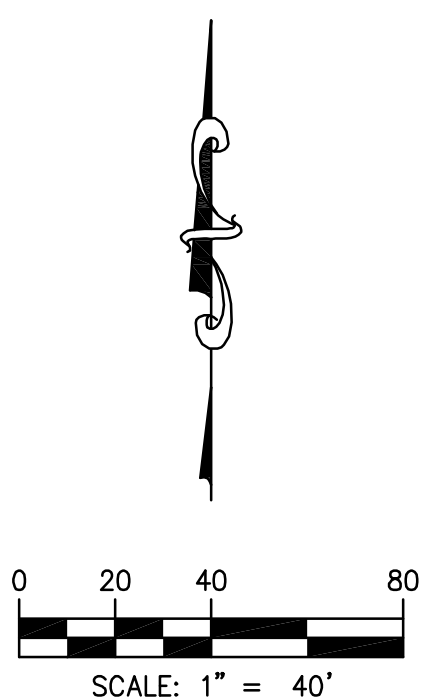
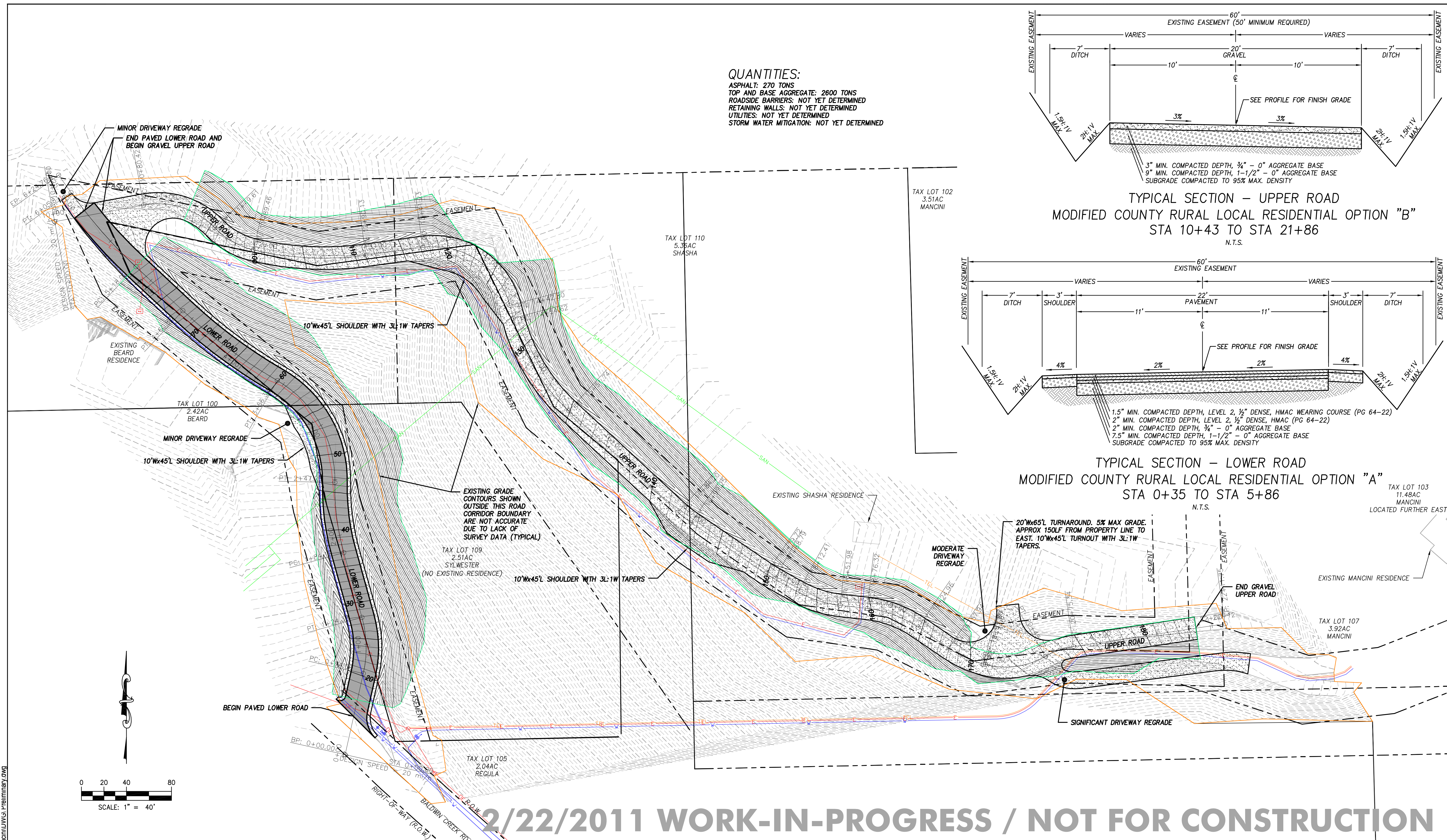
QUANTITIES:
 ASPHALT: 270 TONS
 TOP AND BASE AGGREGATE: 2600 TONS
 ROADSIDE BARRIERS: NOT YET DETERMINED
 RETAINING WALLS: NOT YET DETERMINED
 UTILITIES: NOT YET DETERMINED
 STORM WATER MITIGATION: NOT YET DETERMINED



TYPICAL SECTION - UPPER ROAD
 MODIFIED COUNTY RURAL LOCAL RESIDENTIAL OPTION "B"
 STA 10+43 TO STA 21+86
 N.T.S.



TYPICAL SECTION - LOWER ROAD
 MODIFIED COUNTY RURAL LOCAL RESIDENTIAL OPTION "A"
 STA 0+35 TO STA 5+86
 N.T.S.



2/22/2011 WORK-IN-PROGRESS / NOT FOR CONSTRUCTION

DESIGNED:	SSS						
DRAWN:	SSS						
CHECKED:							
DATE:	1/1/2011						
<table border="1"> <thead> <tr> <th>DATE</th> <th>NO.</th> <th>DESCRIPTION</th> </tr> </thead> <tbody> <tr> <td colspan="3" style="text-align: center;">REVISIONS</td> </tr> </tbody> </table>		DATE	NO.	DESCRIPTION	REVISIONS		
DATE	NO.	DESCRIPTION					
REVISIONS							

SUMMERSETT CIVIL ENGINEERING
 6305 Miller Road
 Mount Hood Parkdale, OR 97041-8722
 (541) 352-9313

PRELIMINARY PLAN
MANCINI ACCESS ROAD
 T01N R10E S21 TL107 HOOD RIVER COUNTY, OR

SHEET NO.
1 OF **6**
 JOB NO.
 01N10E21107

I:\Users\Public\SSC\Projects\Mancini\DWG\A_Preliminary.dwg